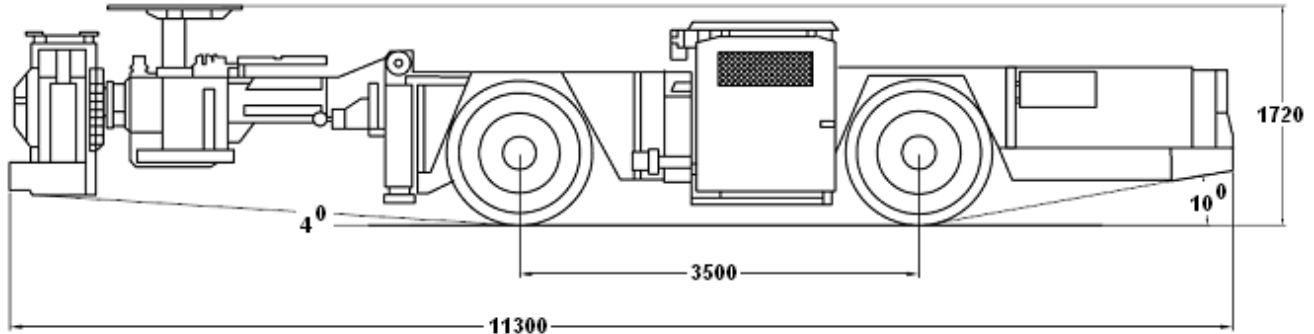


**ROOF MASTER 1.7**

*Low profile roof bolter*



**DESCRIPTION**

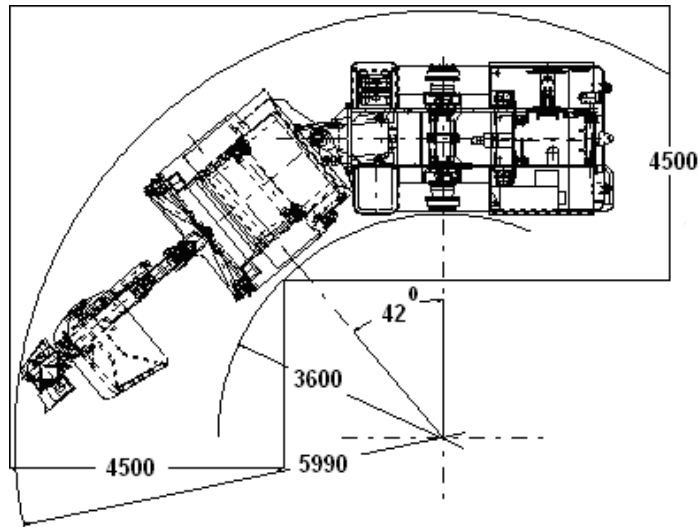
- Rotary drilling incorporating dry drilling with dust collection.
- Stackable drilling system enables holes of between 25 to 38 mm dia. to be drilled to up to 25.0m depth (depending on drilling and strata conditions).
- 5.0m straight line drill coverage.
- “Man in Position” drilling system – locates the operator close to the drilling and bolting operations and is protected by an MSHA Certified hydraulic canopy.
- Minimum tramming height: 1.72m.
- Ergonomic, fully adjustable, operator seat with suspension. Hydraulically adjustable operator’s protection canopy conforming to FOPS & ROPS regulations.
- Reliable hydraulic controls – ensuring low operating costs and high performance.
- Diesel powered articulated chassis with permanent 4-wheel drive.
- Fail-safe, wet multi-disc service brakes with additional fail-safe emergency-parking brake.

**MAIN COMPONENTS**

<b>Boom with Mast</b>	TITAN BOOM and MAST "A"
<b>Diesel engine</b>	Cummins QSB 4.5 – 97 kW @ 2300 rpm
<b>Tires</b>	14.00 x 24

**METRIC SYSTEM**

<b>WEIGHT</b>	18000 kg
<b>DIMENSIONS</b>	
<b>Length</b>	11300 mm
<b>Width</b>	2200 mm
<b>Height (tramming position)</b>	1720 mm
<b>Turning radius</b>	R <sub>i</sub> = 3600 mm R <sub>o</sub> = 5990mm



**WORKING UNIT**

<b>BOOM</b>	Fletcher telescopic boom
<b>Boom extension</b>	914 mm
<b>Lifting angle</b>	Enabling bolting in roofs up to 3.0 m (120 in) in height
<b>Swing angle</b>	33° (left) 44° (right)
<b>Canopy</b>	Hydraulically operated, MSHA certificated
<b>Working platform</b>	Hydraulically operated
<b>Platform extension</b>	305 mm
<b>Control panel</b>	at the left side of the boom

<b>MAST</b>	Fletcher telescopic mast
<b>Type</b>	Titan A with hydraulic drill guide
<b>Feed force</b>	0 – 4535 kG
<b>Feed stroke</b>	1372 mm
<b>Overall length (retracted)</b>	1179 mm
<b>Overall length (max. extended)</b>	1880 mm
<b>Feed</b>	0 – 9,14 mpm
<b>Tilt</b>	+/- 90° (left / right)
<b>Control panel</b>	at the left side of the boom

<b>ROCKDRILL</b>	Fletcher Heavy duty rotary rockdrill
<b>Torque</b>	0 – 390 Nm
<b>Rotation</b>	0 – 560 rpm

**DRY DRILLING SYSTEM**

Rotary Fletcher drill head with a Dust Collection System

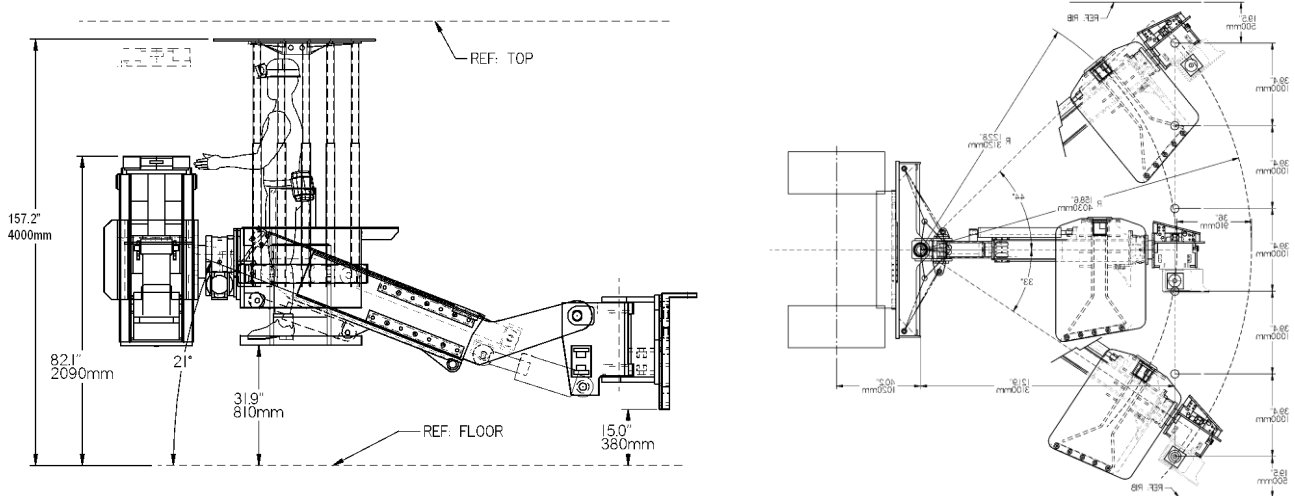
**DUST COLLECTION SYSTEM**

Dry drilling is performed by the rotary method, which has the added advantage of a very efficient hydraulically driven dust collection system. Internal dust collection keeps operator's area clean. These systems work by drawing the dust through the drill steel and drill head, then into the dust box. A final filter within the dust box stops the smallest particles from passing through to the blower.

**NOTE:** Dust Collection System is a part of Dry Drilling System, not available with optional Water Drilling System

<b>Vacuum pump</b>	Roots, hydraulically driven
<b>Vacuum</b>	
<b>I stage of collecting</b>	381 – 457 mm Hg
<b>II stage of collecting</b>	cyclone emptied automatically
<b>Vacuum pump</b>	dust tank with cyclones and filter of dust

**COVERAGE**



**CARRIER**

<b>Diesel engine</b>	Cummins QSB 4.5 – 97 kW @ 2300 rpm
<b>Tramming</b>	Four wheel drive (Power shift)
<b>Articulation</b>	Danfoss – Orbitrol controlled by steering wheel
<b>Brakes</b>	Fail-safe, wet multi-disc service brakes with additional fail-safe emergency-parking brake
<b>Transmission</b>	R 24000 Dana Off-Highway
<b>Torque converter</b>	C270 Dana Off-Highway
<b>Axles</b>	123 Dana Off-Highway
<b>Tires</b>	14.00 x 24
<b>Fuel tank</b>	90 l
<b>Electrical control system</b>	24 V

**ROOF MASTER 1.7**

Battery	2 x 12 V
Driving lights	4 x 35 W, LED type
Max. speed on flat surface	12 km/h
Automatic centralized lubrication	SKF
Hand pump to release emergency/parking brakes	

**HYDRAULIC SYSTEM**

Hydraulic pumps	Gear
Pressure	150 – 200 bar
Tank of oil with oil level indicator, return filter	260 l
Filtration	10 µm
Hydraulic oil	HV 68

**ELECTRICAL SYSTEM**

Motor	30 kW
Voltage	to suit customer's requirements
Working lights	3 x 35 W – 24 V
Cable reel	MINE MASTER
Capacity	80 m

**OPTIONAL EQUIPMENT**

<b>FIRE SUPPRESSION SYSTEM</b>	ANSUL LT-A-101-30, 6 nozzles, activated manually
<b>FIRE SUPPRESSION SYSTEM WITH FLAME DETECTION</b>	ANSUL LT-A-101-30 SC-N with Checkfire 210, 6 nozzles, activated automatically
<b>AIR - CONDITION for bolting operation</b>	MINE MASTER - electric power
<b>ROTARY WET DRILLING</b>	
<b>BY – PASS FILTRATION</b>	Additional recirculation independent hydraulic filtration system for both tramming and drilling systems
<b>SPARE WHEEL</b>	14.00 x 24" (including rim and tire)
<b>ELECTRIC CABLE</b>	